

# Create a RemoteApp and use it on another computer

This guide shows you how to use RemoteApp Tool 5.3.0.0 to create a RemoteApp on a HOST computer and then use the app remotely from a CLIENT computer.

In this scenario we create a RemoteApp for the software GIMP 2 which is installed on the HOST computer. The CLIENT computer will run GIMP 2 remotely. Both computers are on the same local network.

To see the requirements or download RemoteApp Tool, visit:

[www.kimknight.net/remoteapptool](http://www.kimknight.net/remoteapptool)

## 1. Enable Remote Desktop (HOST)

Remote Desktop can be enabled from **Remote** tab in the **System Properties** window.

You can get to System Properties in a different ways, depending on your operating system.

### Windows XP

**Start Menu** > Right-click **My Computer** > Click **Properties** > Click the **Remote tab**

### Windows 7

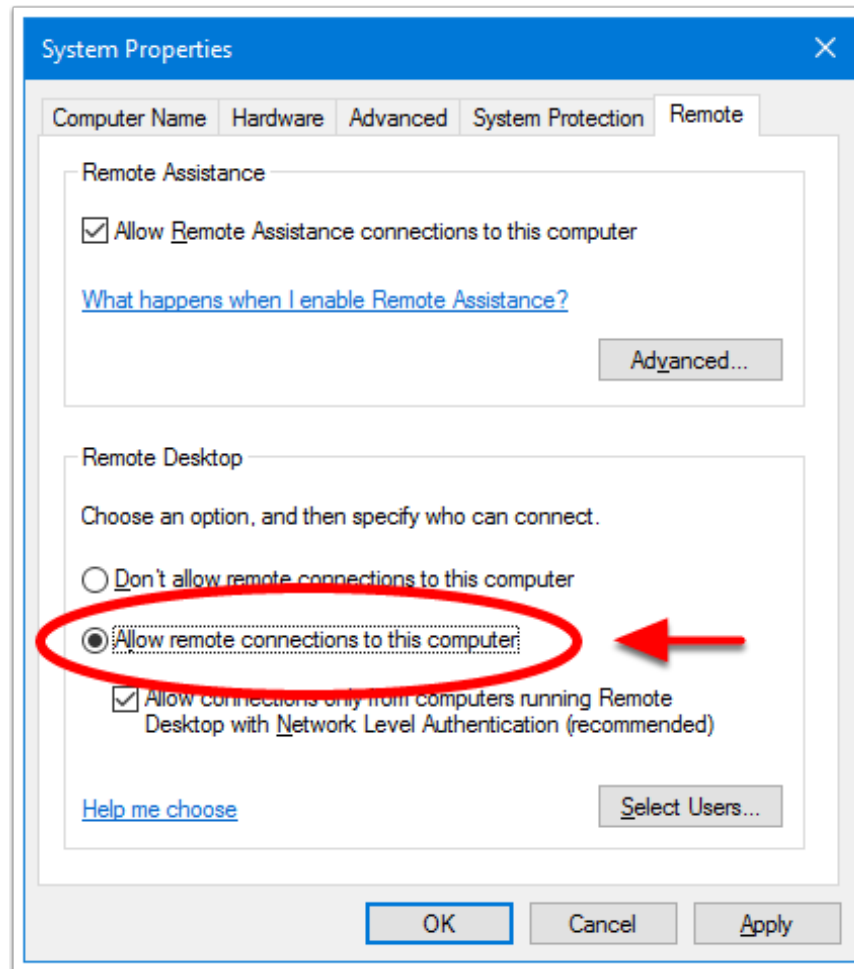
**Start Menu** > Right-click **Computer** > Click **Properties** > Click **Remote settings**

### Windows 8.1 & 10

Right-click **Start Menu** > Click **System** > Click **Remote settings**

Once there, select **Allow remote connections to this computer**.

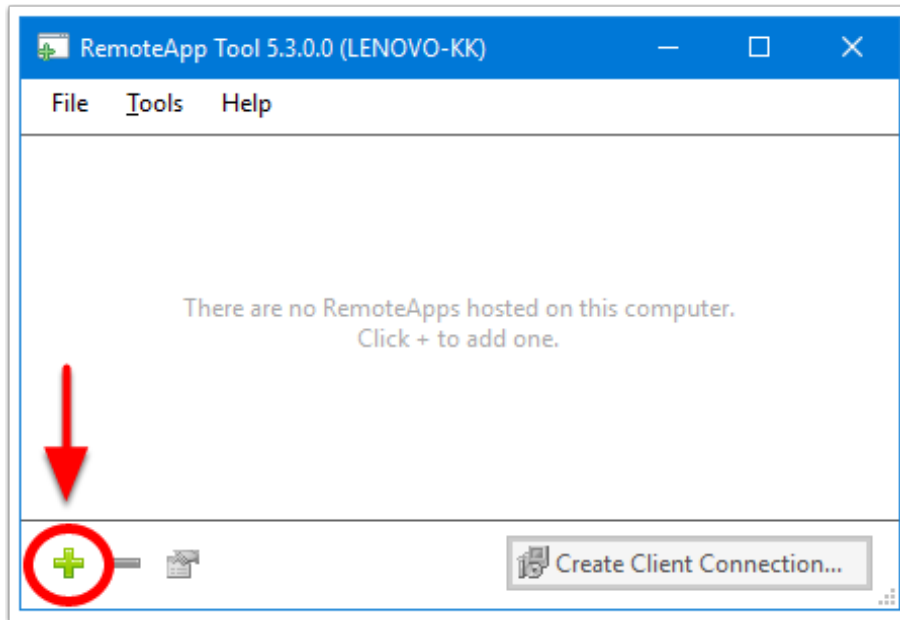
# Create a RemoteApp and use it on another computer



# Create a RemoteApp and use it on another computer

## 2. Open RemoteApp Tool and create a RemoteApp (HOST)

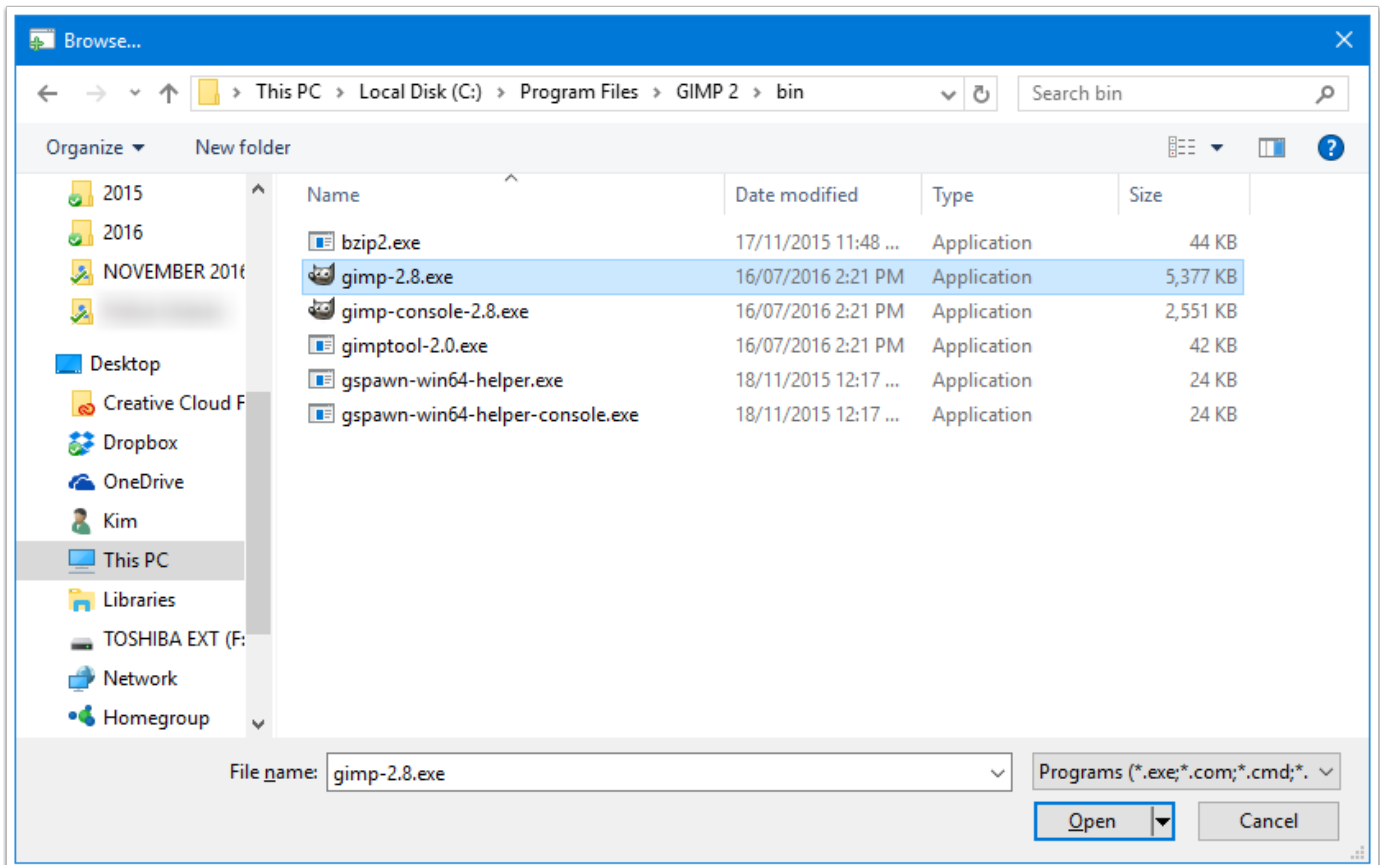
Click the + (plus) button to create a new RemoteApp.



# Create a RemoteApp and use it on another computer

## 3. Select the program (HOST)

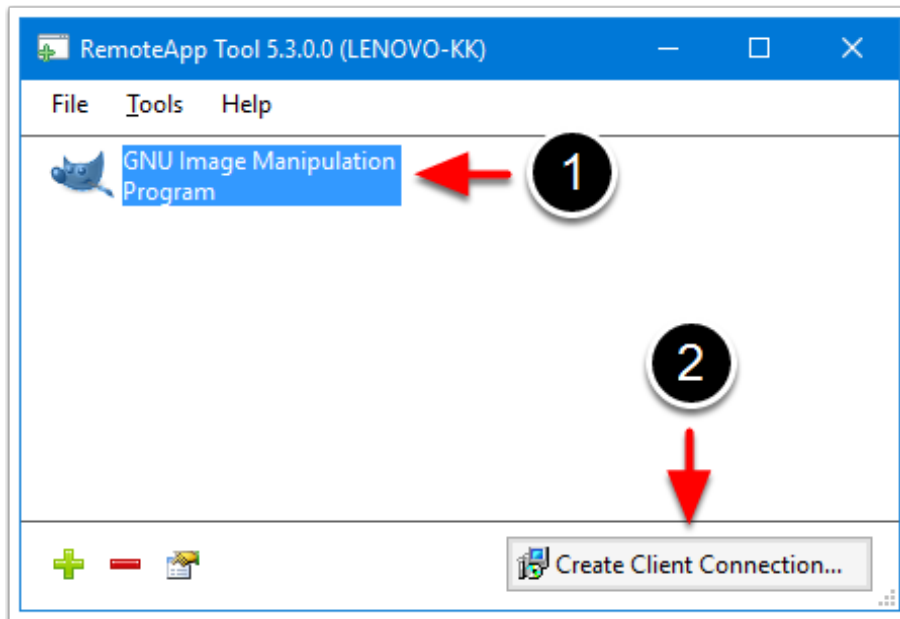
Locate the EXE or shortcut file for your application.



# Create a RemoteApp and use it on another computer

## 4. Create Client Connection file (HOST)

1. Click the RemoteApp
2. Click **Create Client Connection...**



# Create a RemoteApp and use it on another computer

## 5. Confirm details and click Create... (HOST)

You may change the **Server address** to the IP address of your host computer if you have connection problems on the client later.

Client Connection

RDP file  Manually edit RDP file

MSI installer  Create icon files

Remote Server

Server address: LENOVO-KK Port: 3389

Alternative server: LENOVO-KK

Remote Desktop Gateway

Use RD Gateway

RD Gateway address:

Only use RD Gateway if direct connection is unsuccessful

File Type Associations

Disabled Count: 0 File type associations...

MSI Options

Place shortcuts in:  Desktop  Start Menu:  Subfolder  Top level

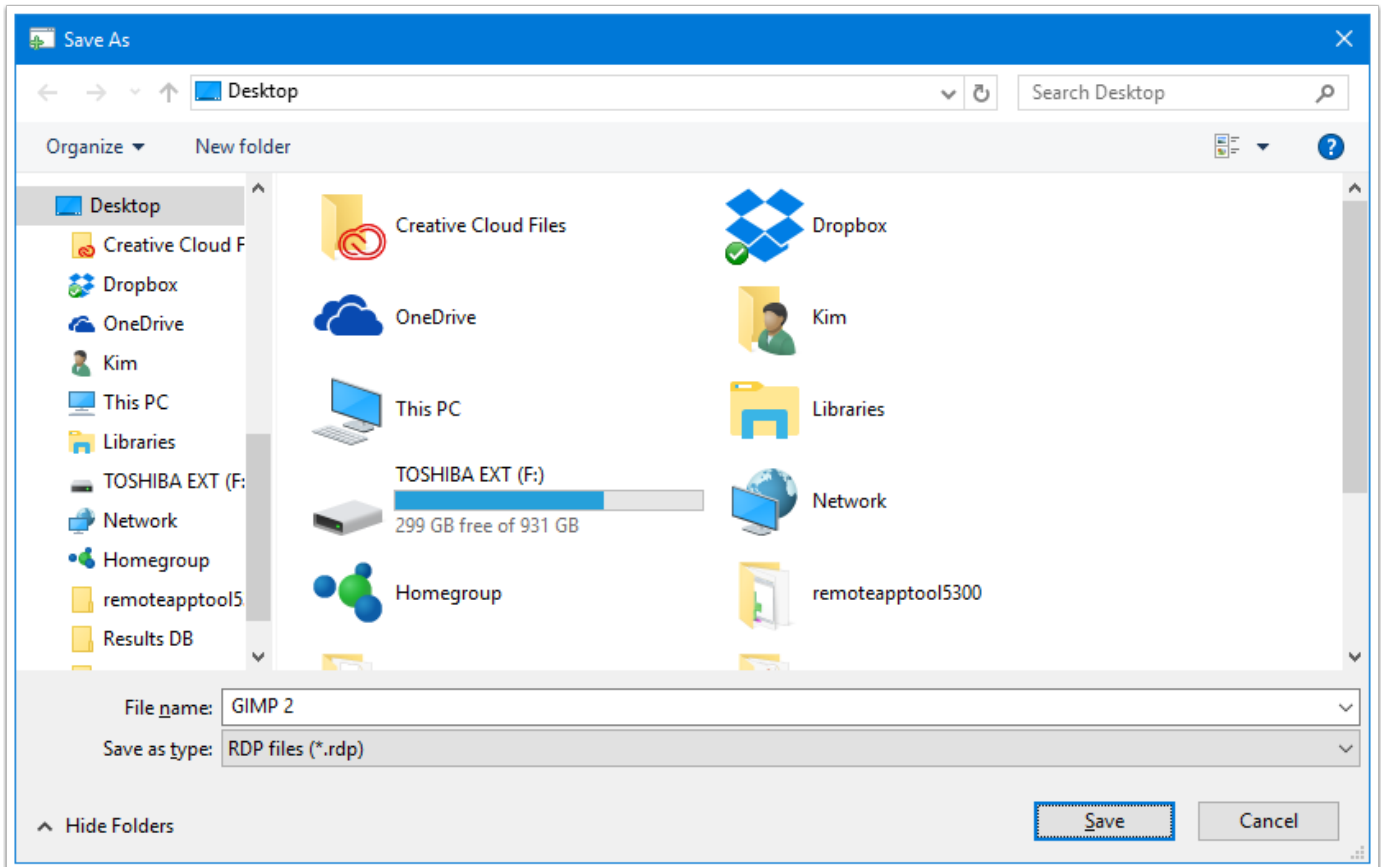
Shortcut tag: ( remote )

Install scope:  Per-machine  Per-user

Save settings Reset to default Cancel Create...

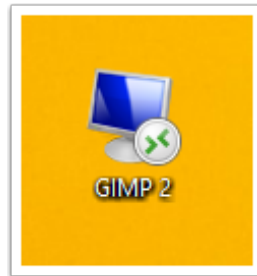
# Create a RemoteApp and use it on another computer

## 6. Save your RDP file (HOST)

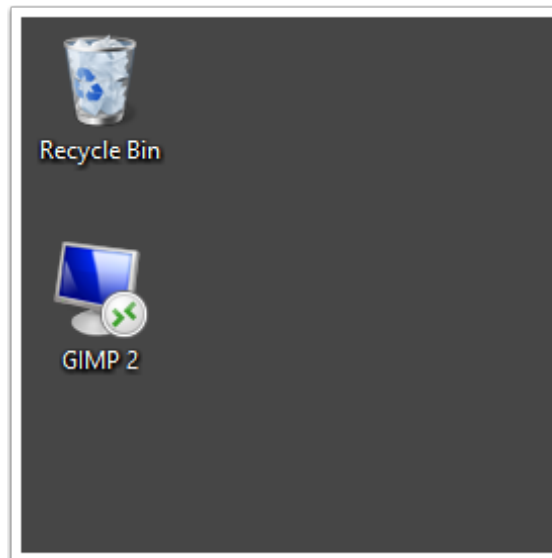


# Create a RemoteApp and use it on another computer

7. Copy your RDP file from the HOST computer to the CLIENT computer



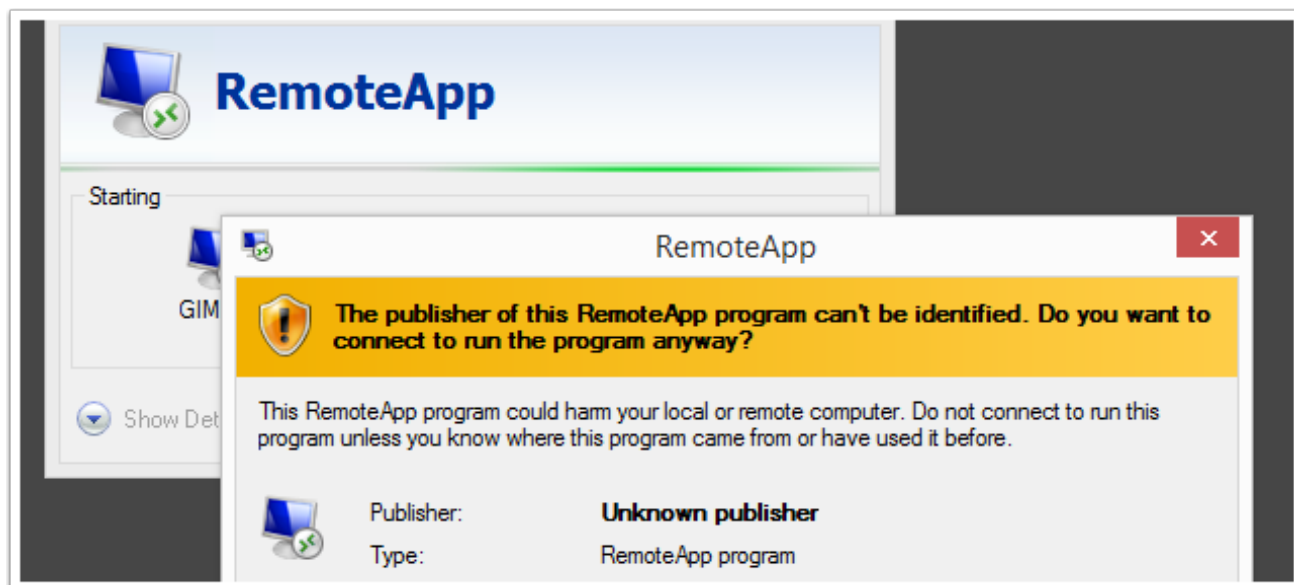
8. Open the RDP file (CLIENT)



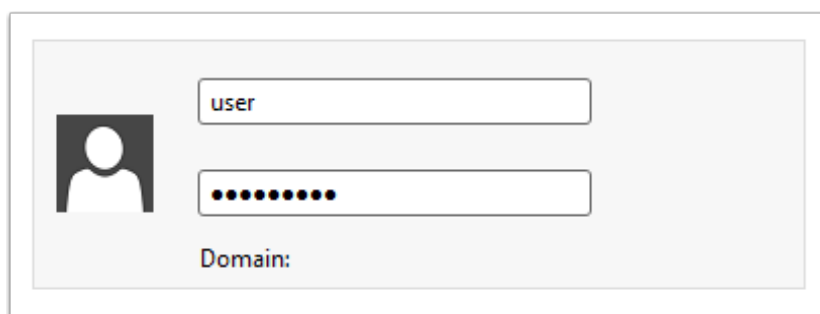


# Create a RemoteApp and use it on another computer

## 9. Confirm any security prompts (CLIENT)



## 10. Enter your username and password to connect to the HOST computer (CLIENT)



The image shows a login form with a user icon on the left. The form contains the following fields:

- A text input field containing the username "user".
- A password input field with ten dots representing the password.
- A label "Domain:" followed by an empty text input field.

# Create a RemoteApp and use it on another computer

## 11. Your RemoteApp should open!

