

Setup RAWeb Webfeed with a Self-Signed Certificate

By connecting to a Webfeed, Windows and mobile clients automatically create shortcuts (in the Start Menu) for every RemoteApp and Remote Desktop Connection that is made available through RAWeb.

A requirement of webfeed is that the web server which hosts RAWeb must be running HTTPS and be secured with an SSL certificate.

This guide shows you how to setup RAWeb Webfeed (using a self-signed certificate) on a HOST computer, and then connect a CLIENT computer to it. Both computers are on the same local network. Steps may vary slightly between operating systems.

In this scenario, the HOST is Windows 8.1 and the CLIENT is Windows 10.

A limitation of using a self-signed certificate is that it must be installed on each client computer before it will be able to connect. If you wish to avoid this limitation, you must purchase an SSL certificate from a vendor and install it on your server. Installing a purchased SSL certificate is outside the scope of this document.

1. Open IIS Manager (HOST)

Windows 7

Control Panel > Administrative Tools > IIS Manager

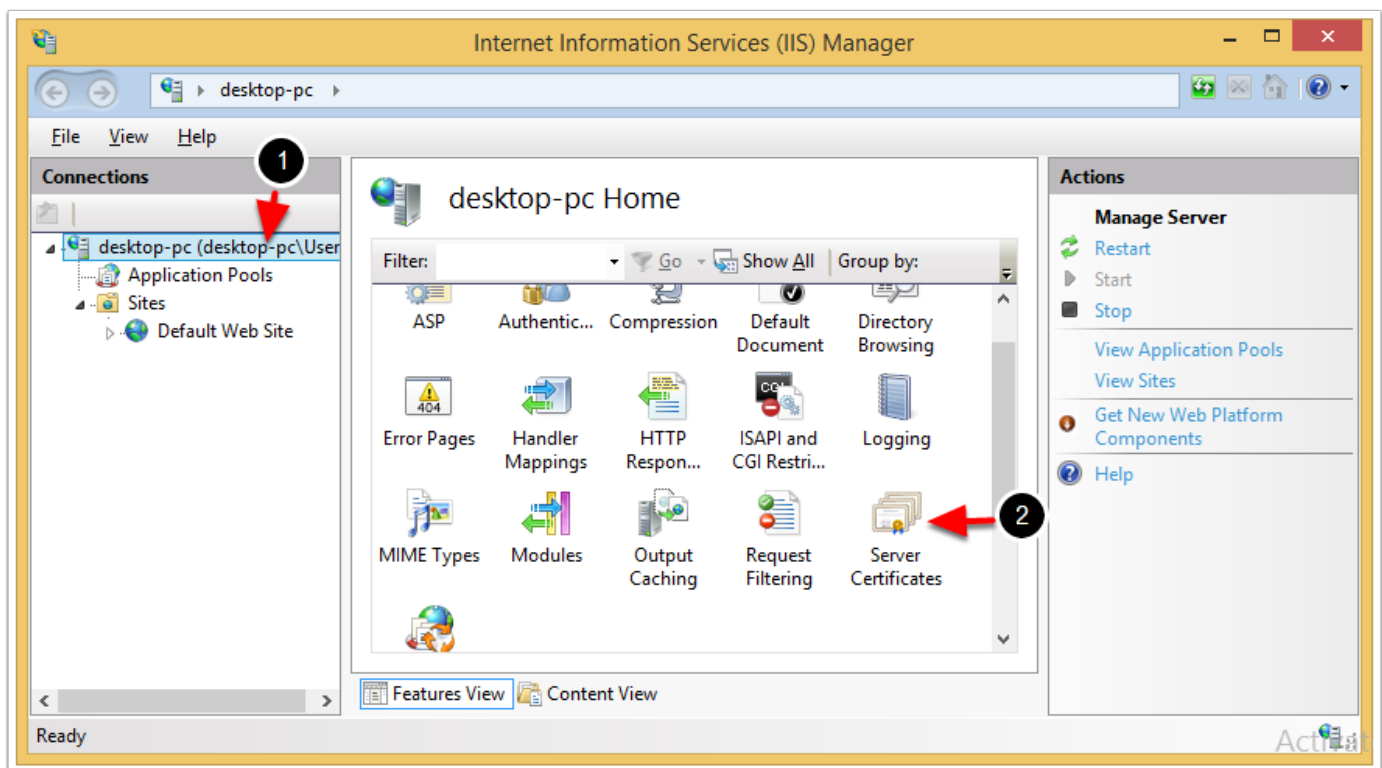
Windows 8 and 10

Click the Start button and type **IIS Manager**

Setup RAWeb Webfeed with a Self-Signed Certificate

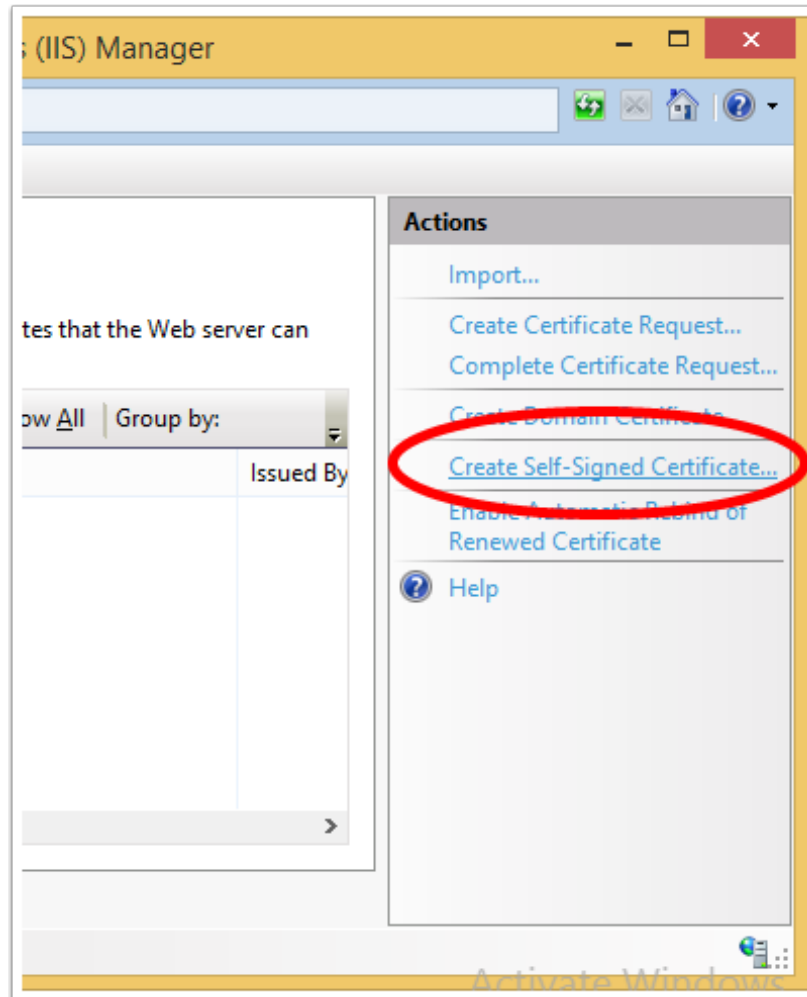


2. Open Server Certificates (HOST)



Setup RAWeb Webfeed with a Self-Signed Certificate


3. Click Create Self-Signed Certificate... (HOST)



Setup RAWeb Webfeed with a Self-Signed Certificate

4. Give the certificate a name (HOST)

Create Self-Signed Certificate



Specify Friendly Name

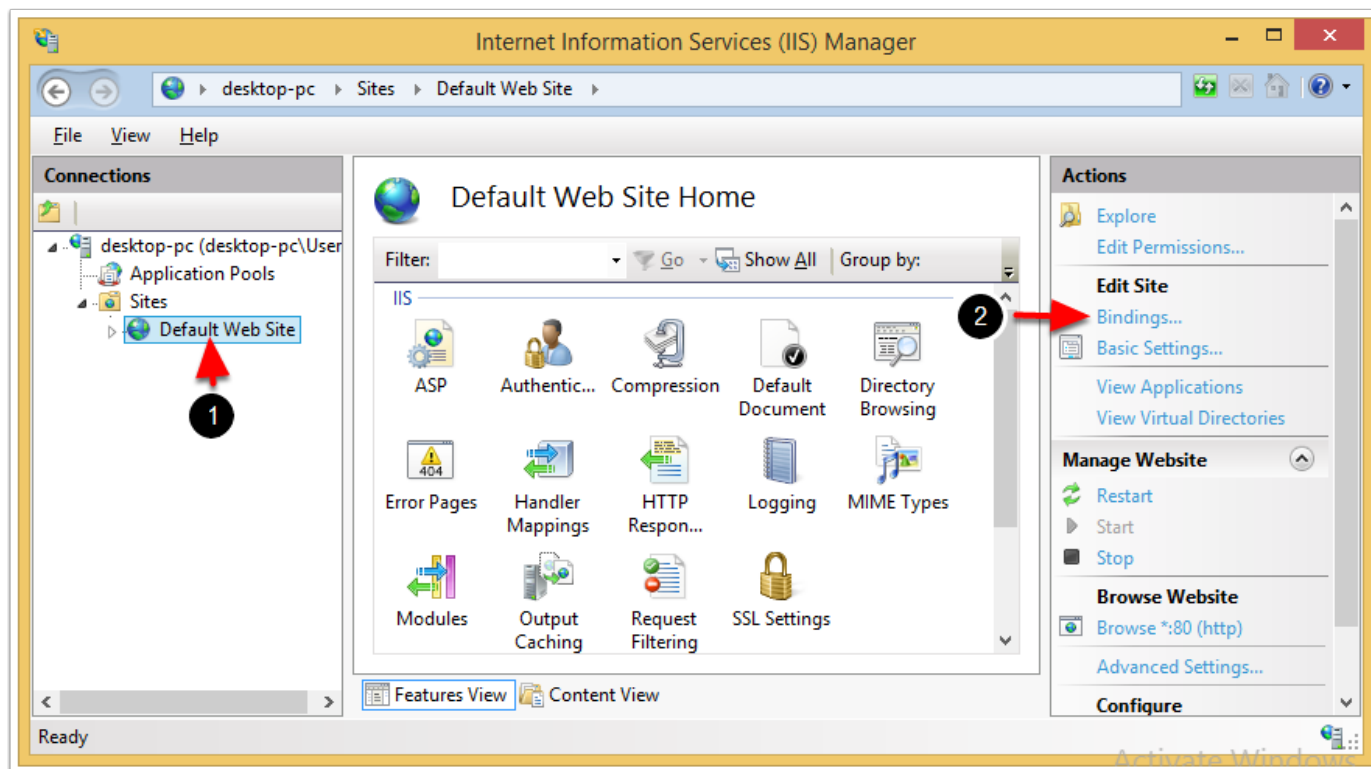
Specify a file name for the certificate request. This information can be sent to a certifying authority:

Specify a friendly name for the certificate:

Select a certificate store for the new certificate:

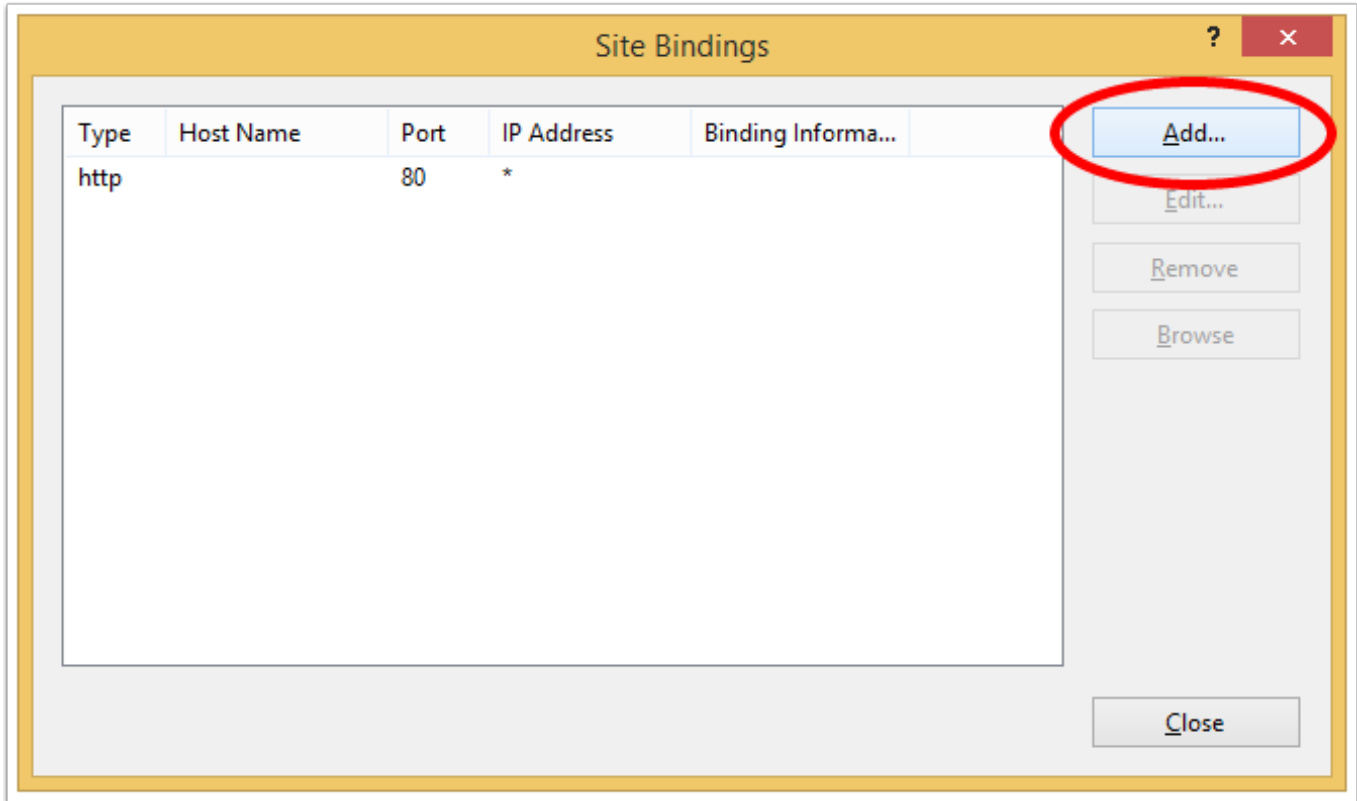
Setup RAWeb Webfeed with a Self-Signed Certificate

5. Edit the Bindings for the Default Web Site (HOST)



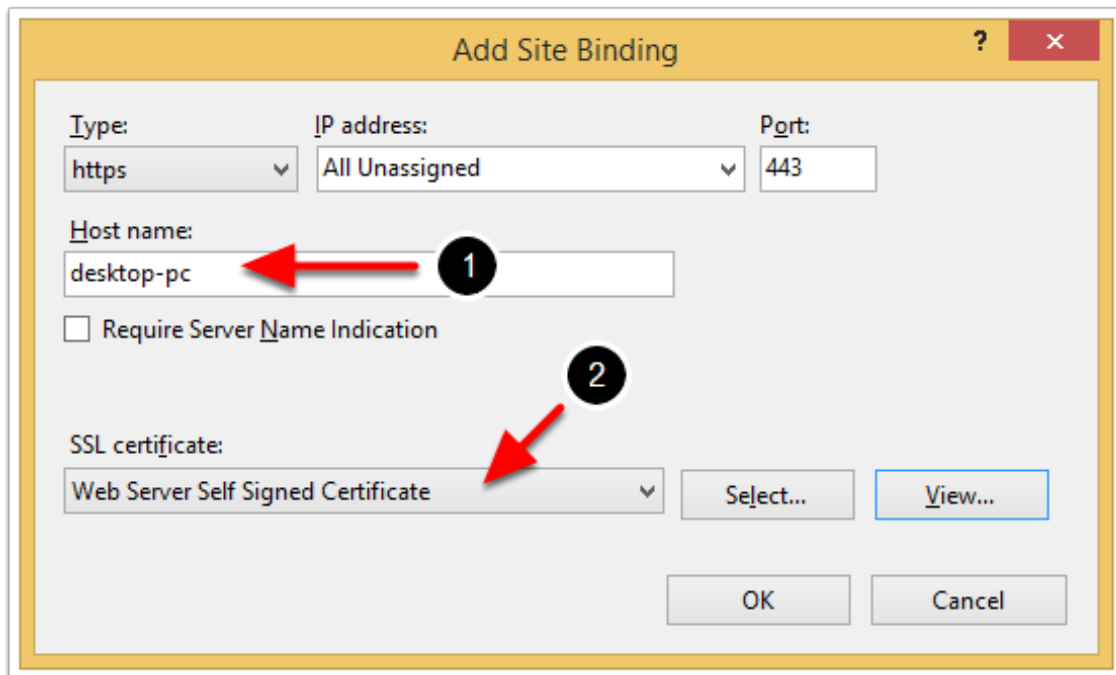
Setup RAWeb Webfeed with a Self-Signed Certificate

6. Click Add... (HOST)



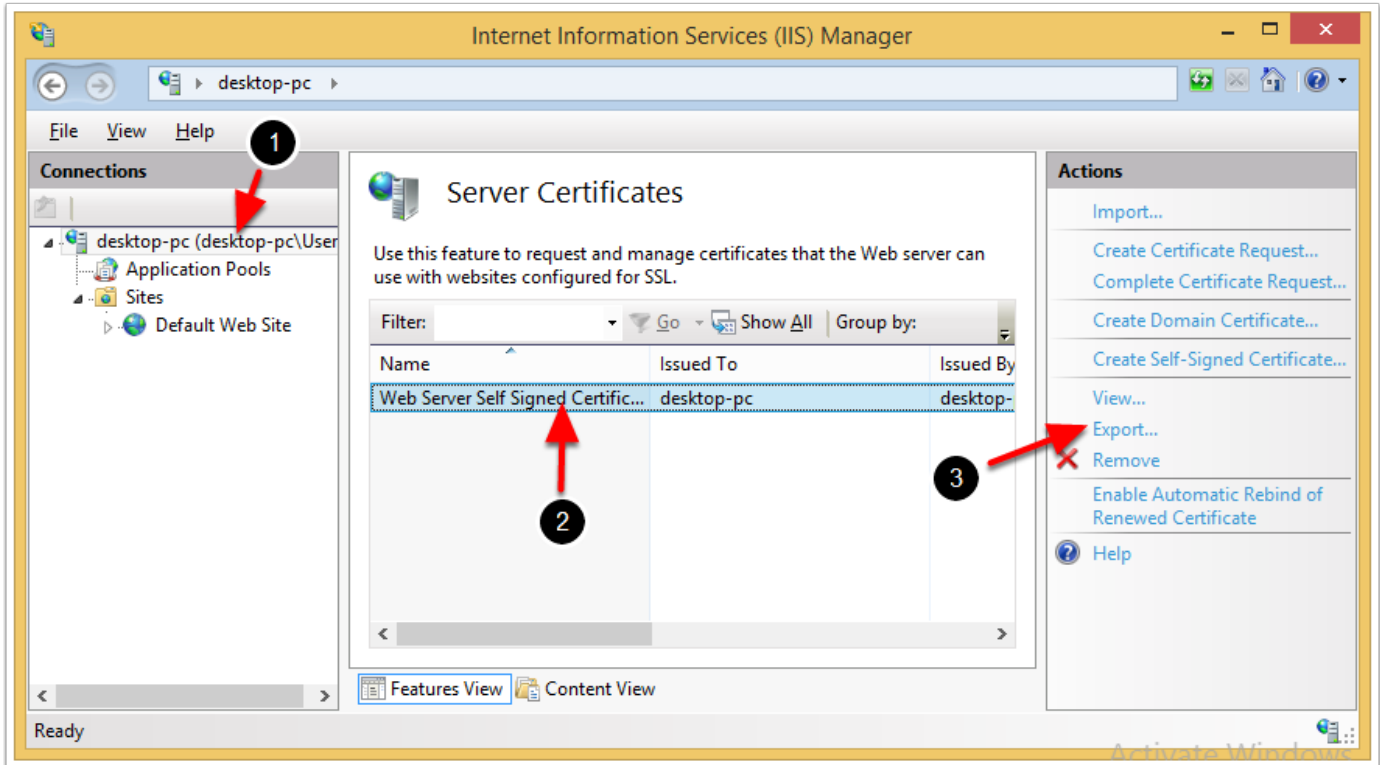
Setup RAWeb Webfeed with a Self-Signed Certificate

7. Enter the Host name and choose your certificate (HOST)



Setup RAWeb Webfeed with a Self-Signed Certificate

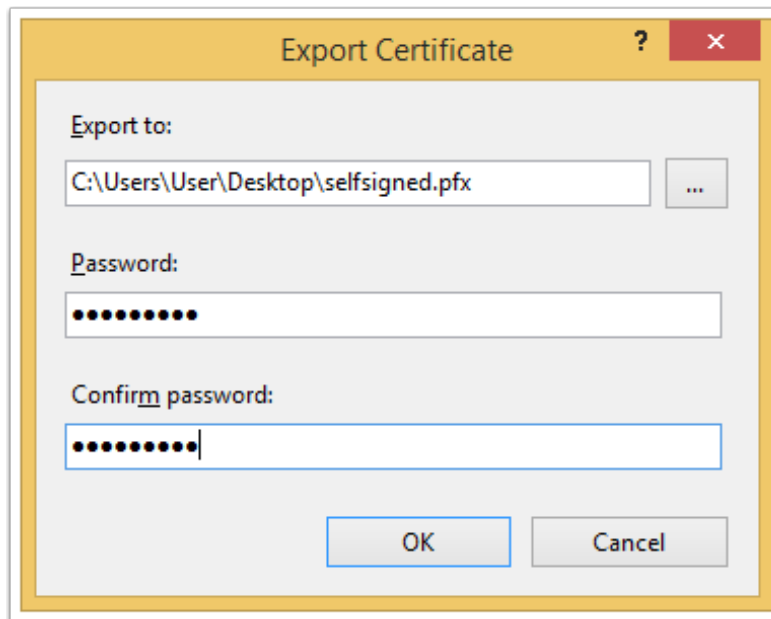
8. Export your certificate (HOST)



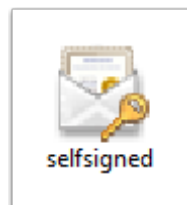
Setup RAWeb Webfeed with a Self-Signed Certificate

9. Choose where to save the certificate and enter a password (HOST)

You need to make a password. It will be used later when importing the certificate on a client. Keep it simple.



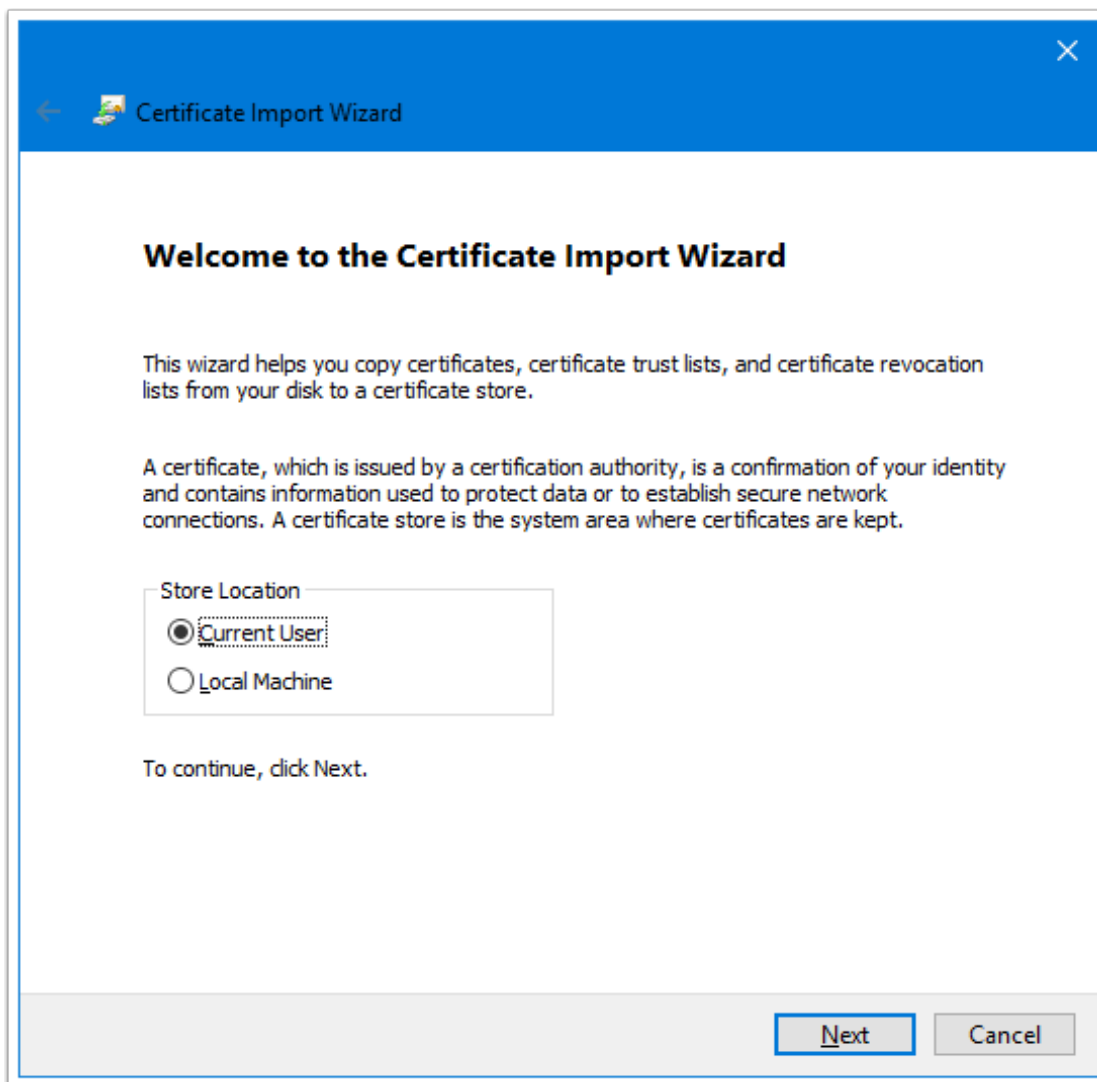
10. Copy the certificate file and open it on a CLIENT



Setup RAWeb Webfeed with a Self-Signed Certificate

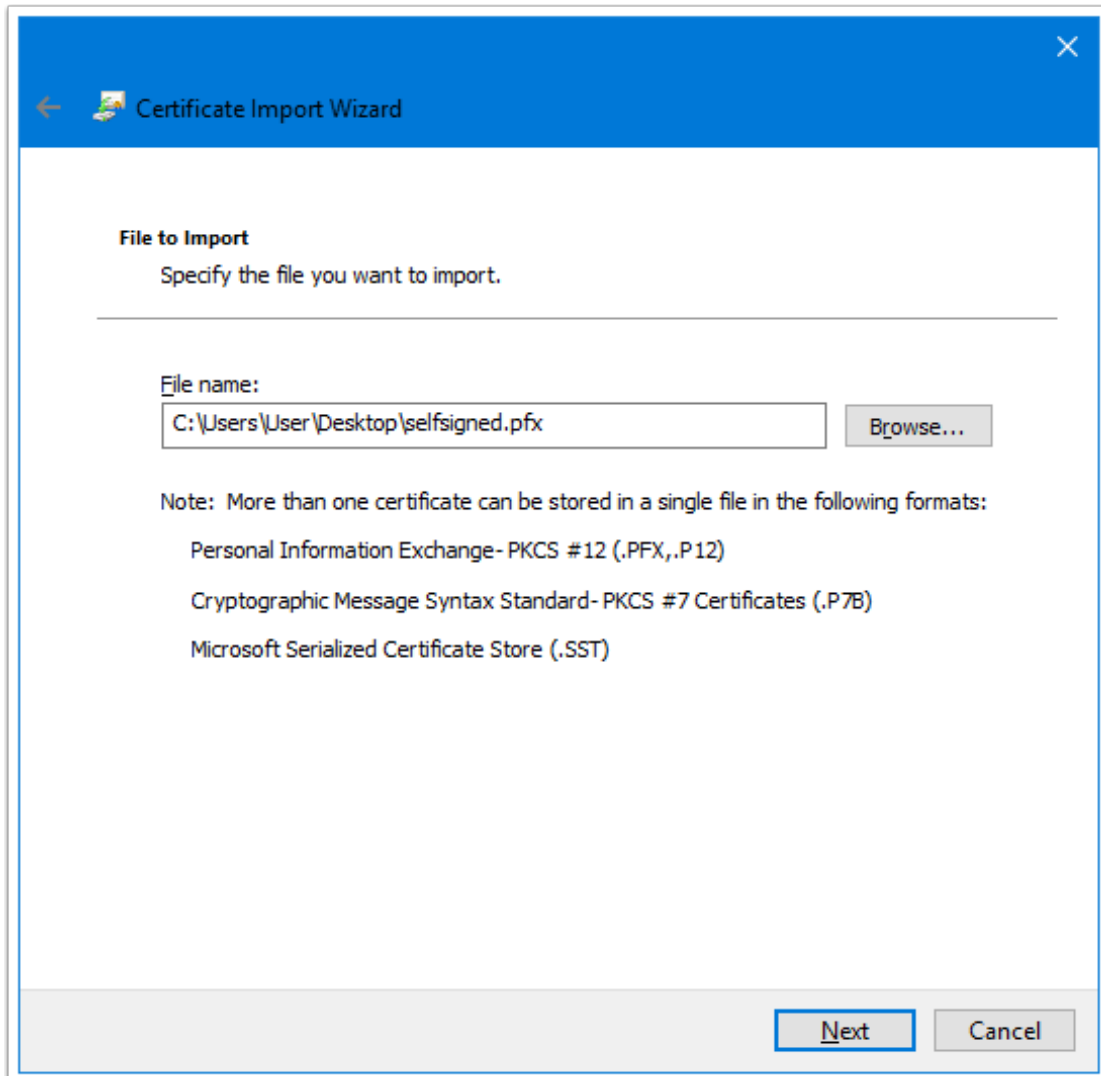
11. Import the certificate file (CLIENT)

Select **Current User**.



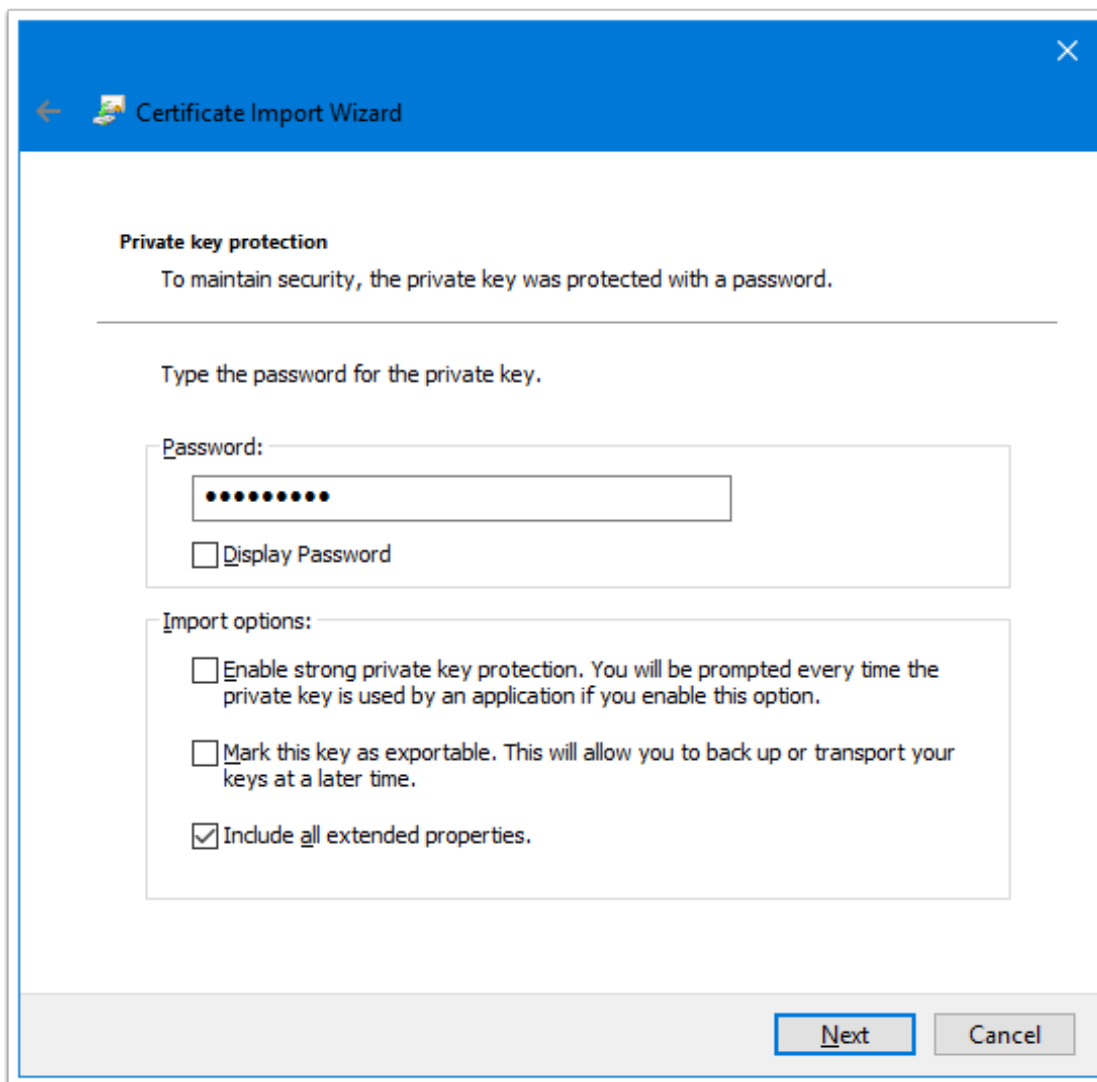
Setup RAWeb Webfeed with a Self-Signed Certificate

12. Click Next (CLIENT)



Setup RAWeb Webfeed with a Self-Signed Certificate

13. Enter the password (CLIENT)



The screenshot shows a Windows dialog box titled "Certificate Import Wizard". The window has a blue header bar with a back arrow, a small icon, and the title text. The main content area is white and contains the following text and controls:

Private key protection
To maintain security, the private key was protected with a password.

Type the password for the private key.

Password:

Display Password

Import options:

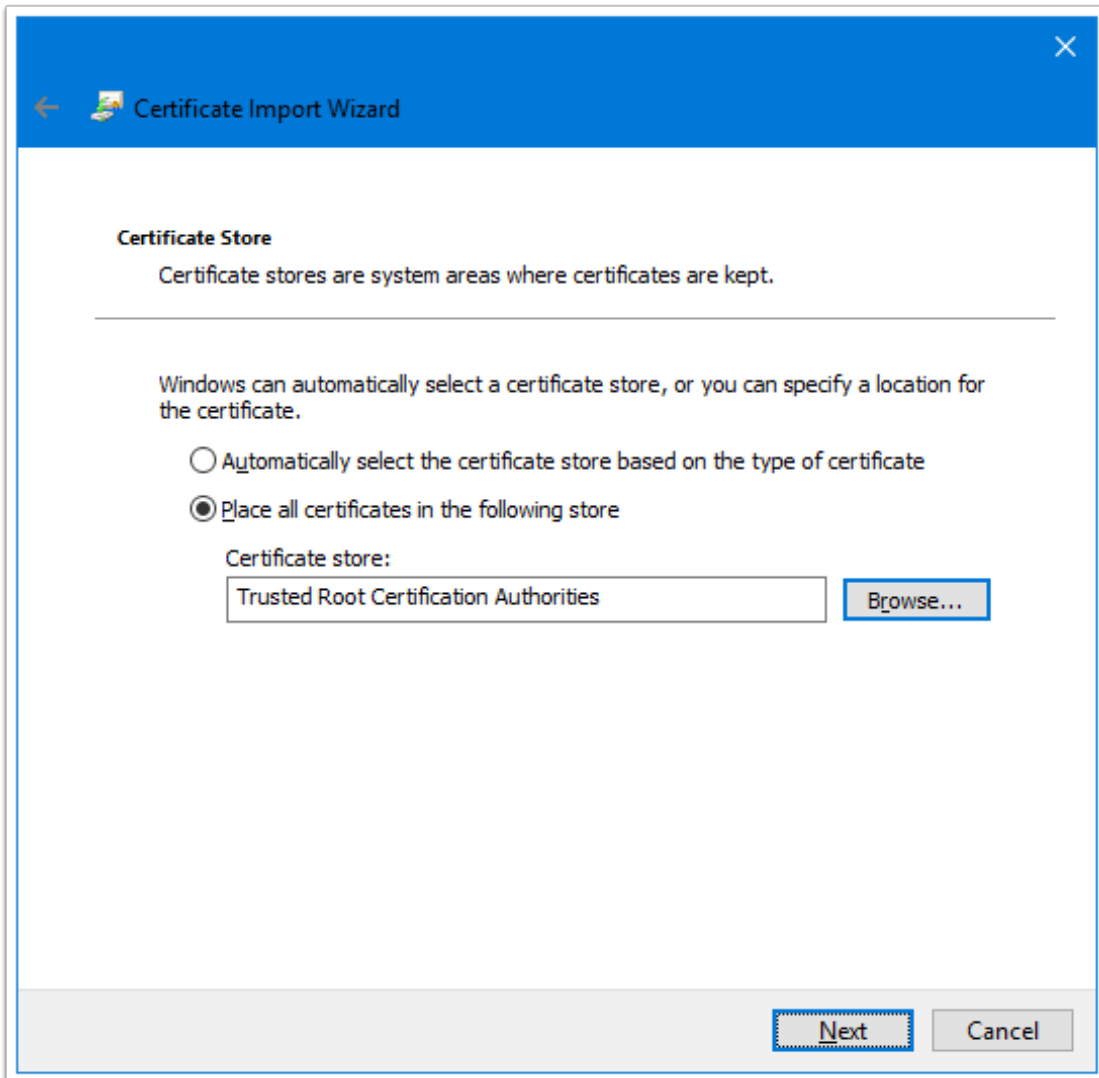
- Enable strong private key protection. You will be prompted every time the private key is used by an application if you enable this option.
- Mark this key as exportable. This will allow you to back up or transport your keys at a later time.
- Include all extended properties.

At the bottom right, there are two buttons: "Next" (highlighted with a blue border) and "Cancel".

Setup RAWeb Webfeed with a Self-Signed Certificate

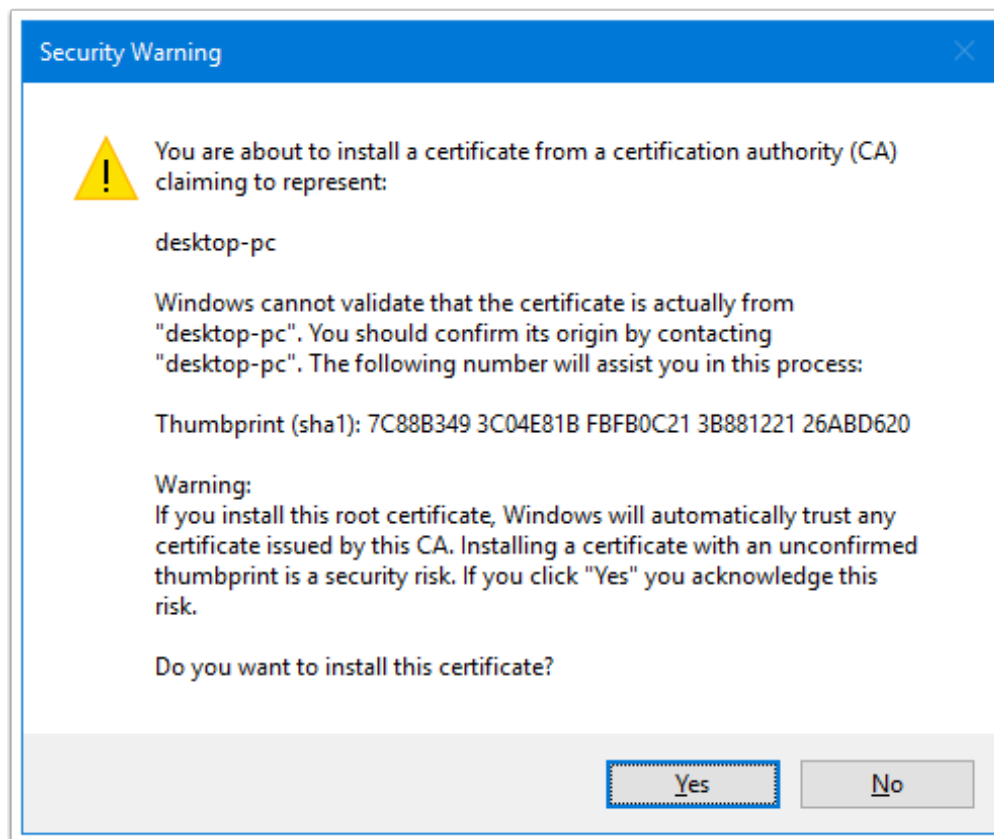
14. Select the correct Certificate Store (CLIENT)

Ensure that **Trusted Root Certification Authorities** is selected.



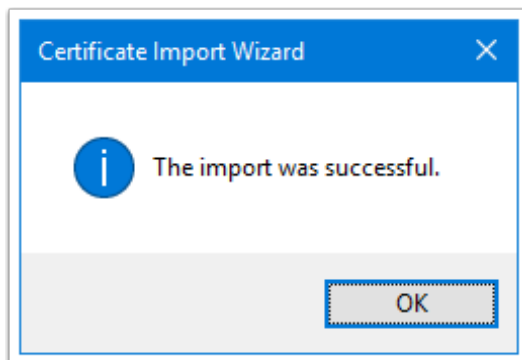
Setup RAWeb Webfeed with a Self-Signed Certificate

15. Click Yes to confirm warning (CLIENT)

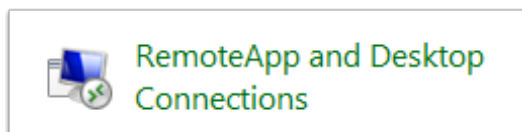


Setup RAWeb Webfeed with a Self-Signed Certificate

16. Confirm certificate was successfully imported (CLIENT)

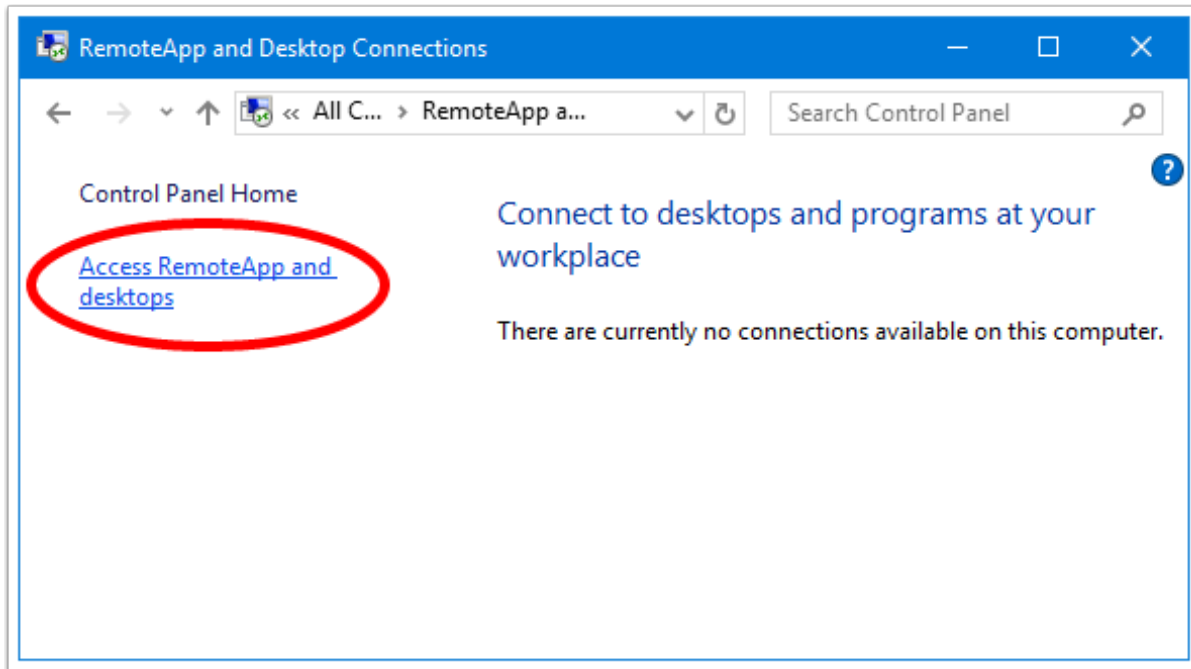


17. Open Control Panel > RemoteApp and Desktop Connections (CLIENT)



Setup RAWeb Webfeed with a Self-Signed Certificate

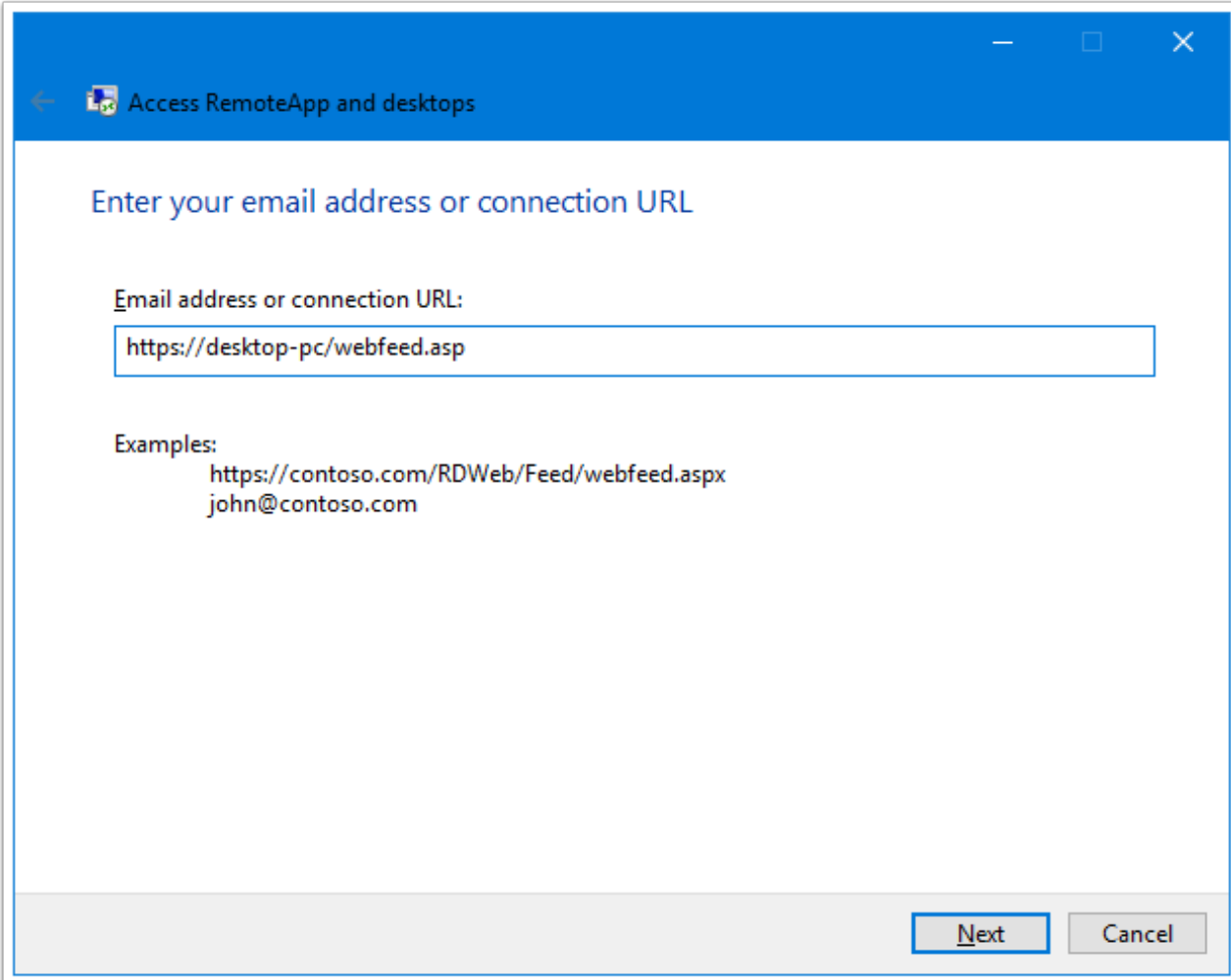
18. Click Access RemoteApp and desktops (CLIENT)



Setup RAWeb Webfeed with a Self-Signed Certificate

19. Enter the webfeed URL (CLIENT)

This will typically be **https://HOSTNAME/webfeed.asp**



Access RemoteApp and desktops

Enter your email address or connection URL

Email address or connection URL:

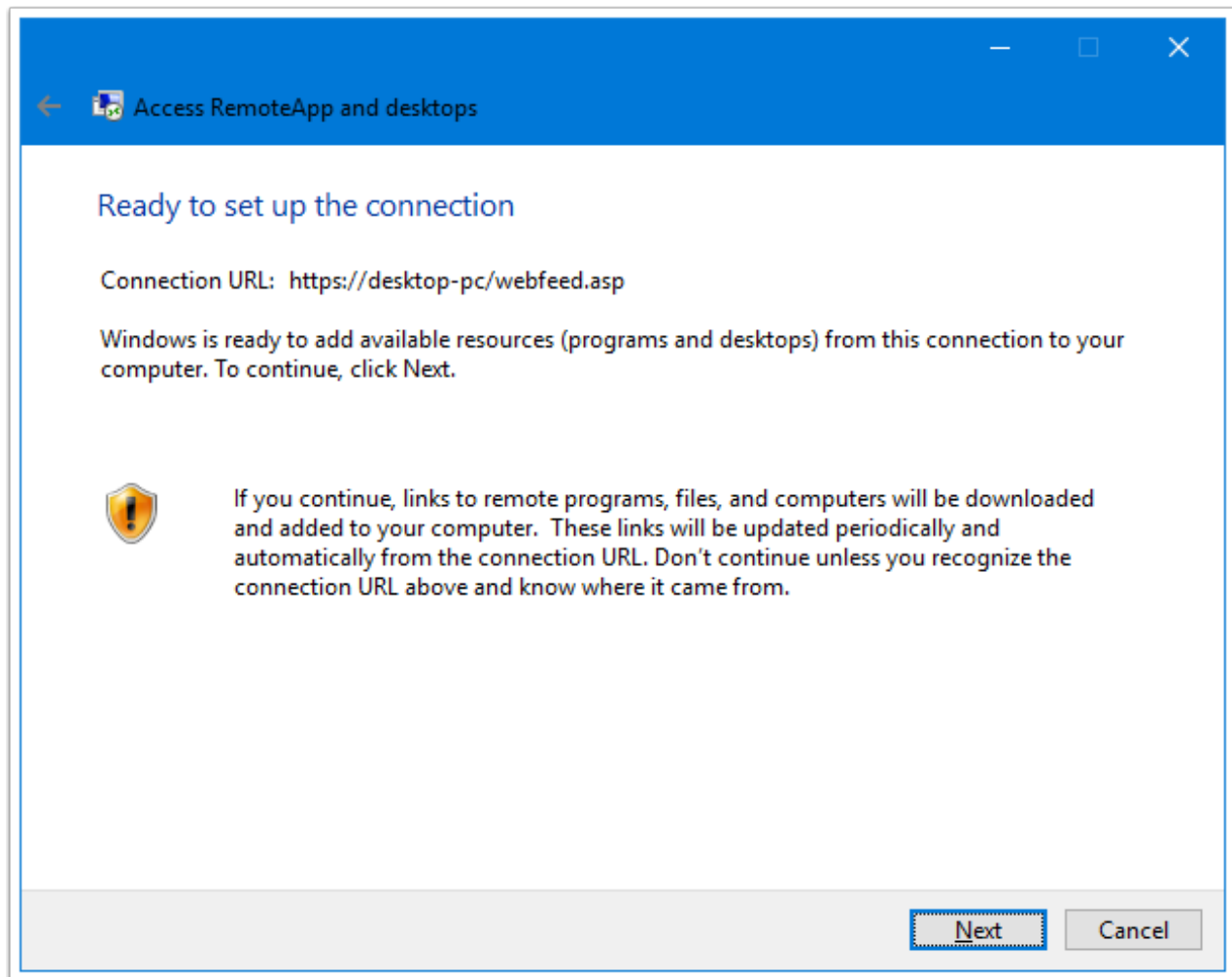
Examples:

- https://contoso.com/RDWeb/Feed/webfeed.aspx
- john@contoso.com

Next Cancel

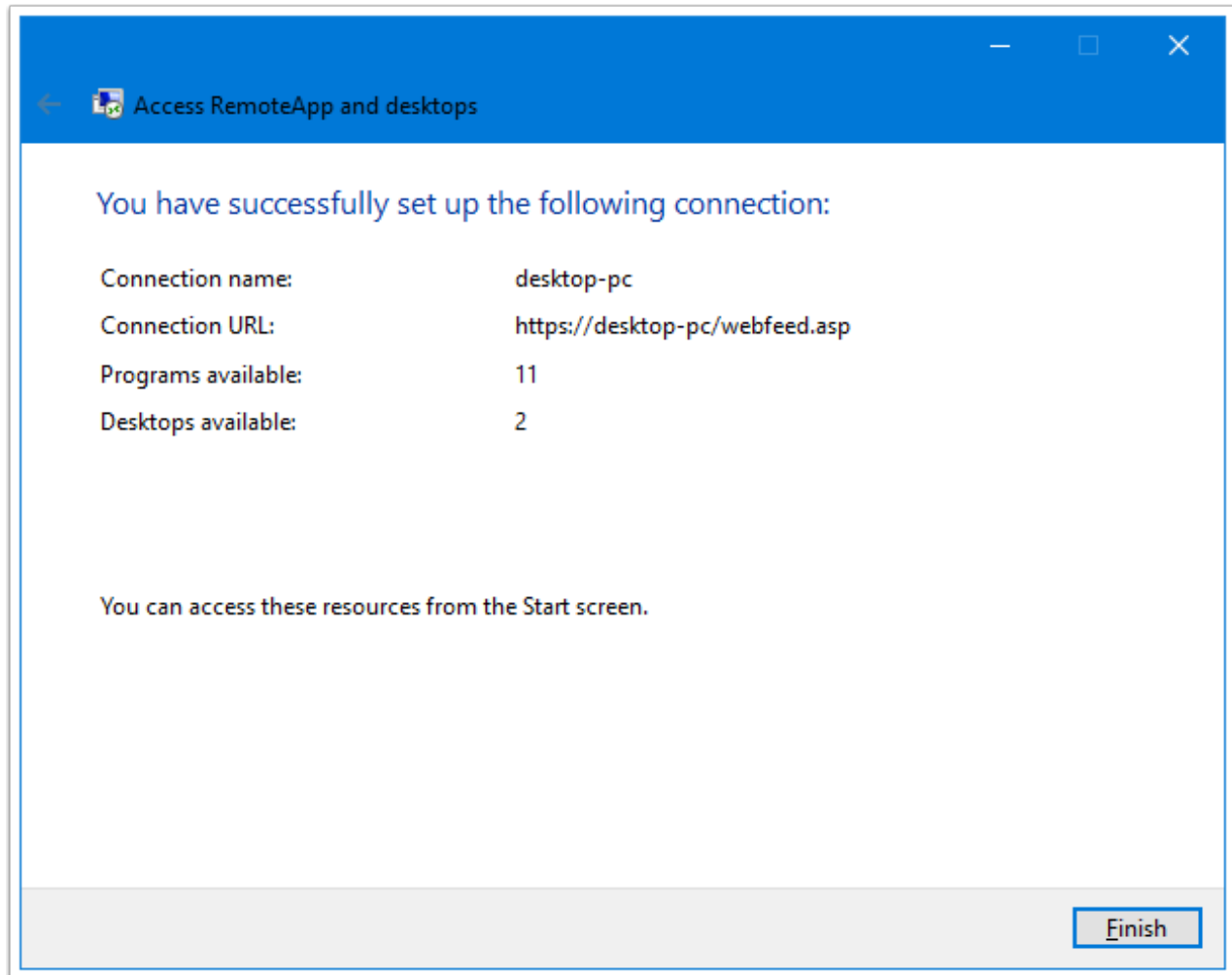
Setup RAWeb Webfeed with a Self-Signed Certificate

20. Click Next (CLIENT)



Setup RAWeb Webfeed with a Self-Signed Certificate

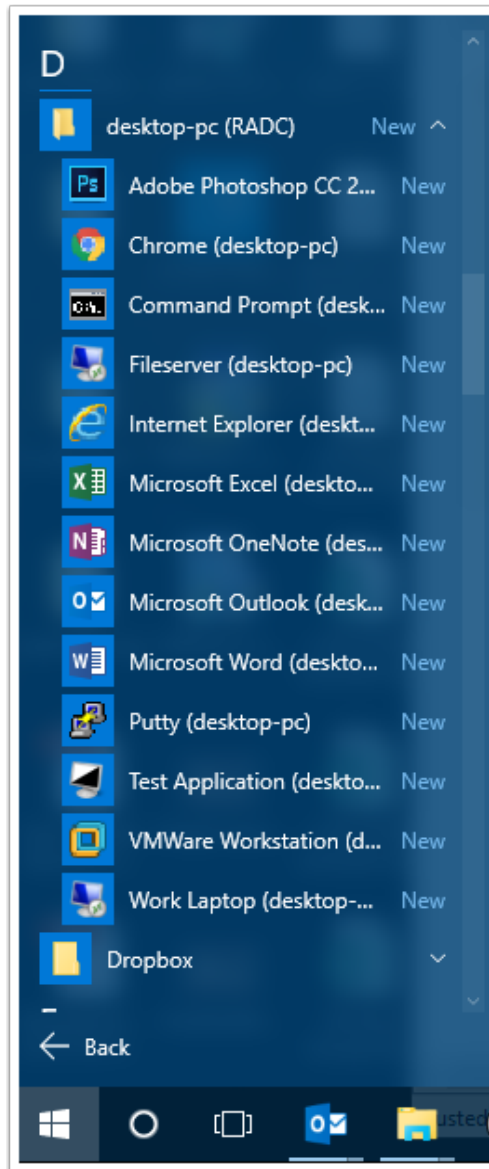
21. Confirm successful connection (CLIENT)



Setup RAWeb Webfeed with a Self-Signed Certificate

22. RemoteApps and Remote Desktop Connections should now appear in the Start Menu (CLIENT)

As RDP files are added and removed from RAWeb, clients will automatically update these shortcuts.



Setup RAWeb Webfeed with a Self-Signed Certificate

Notes

If you want a custom icon displayed for an app, put an ICO file into **c:\inetpub\wwwroot\icon** with the same name as the rdp file eg. **Outlook2010.rdp** would need an icon called **Outlook2010.ico**.

Mobile clients require each ico to be a 32x32 PNG. Icons for mobile clients should be placed in **c:\inetpub\wwwroot\icon32**