

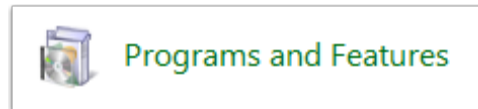
Setup RAWeb Web Interface

This will guide you through setting up RAWeb on the default web site in IIS on Win 8. Steps may vary slightly between operating systems.

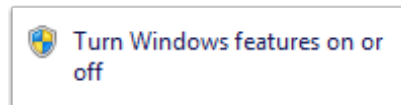
The guide assumes that IIS is not already installed.

1. Go to Control Panel > Programs and Features

If you can't find it, just click the start menu and type **Programs and Features**.



2. Click Turn Windows features on or off



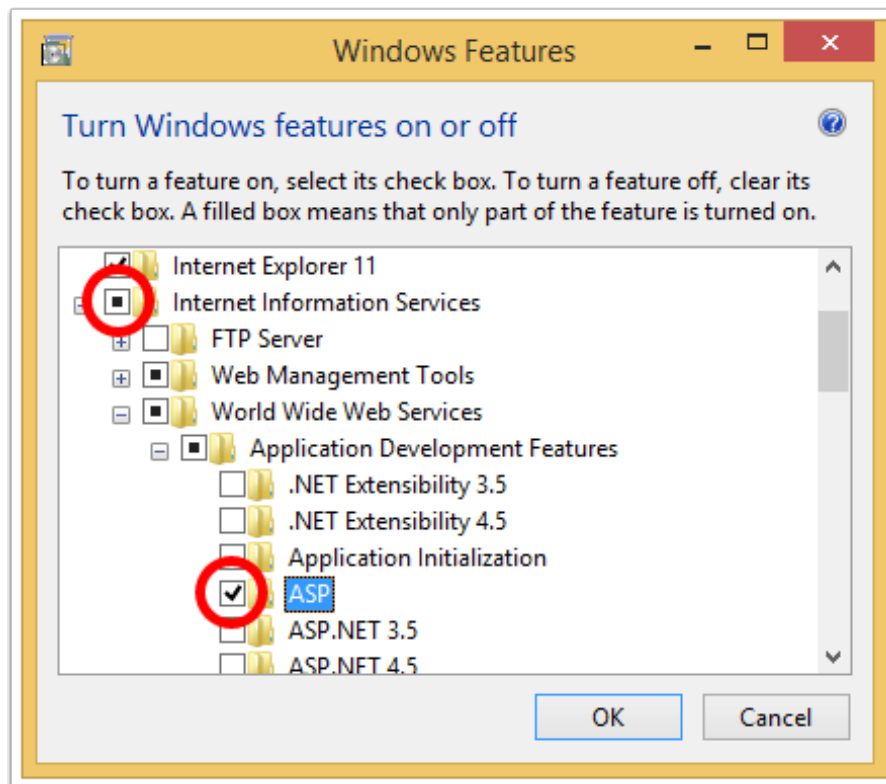
Setup RAWeb Web Interface

3. Install IIS and ASP

Click the box next to **Internet Information Services**.

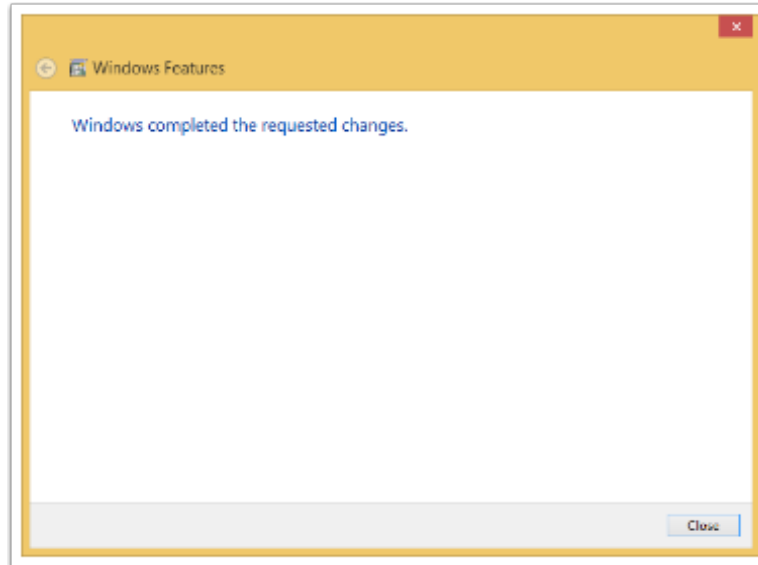
Expand **Internet Information Services > World Wide Web Services > Application Development Features**.

Click the box next to **ASP**.

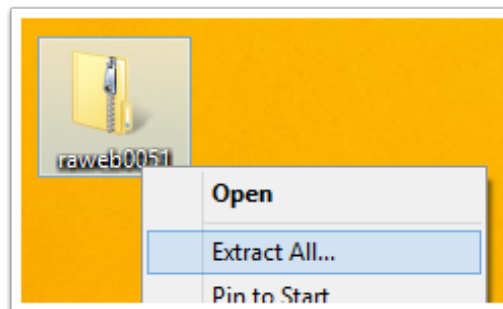


Setup RAWeb Web Interface

4. Wait for changes to apply



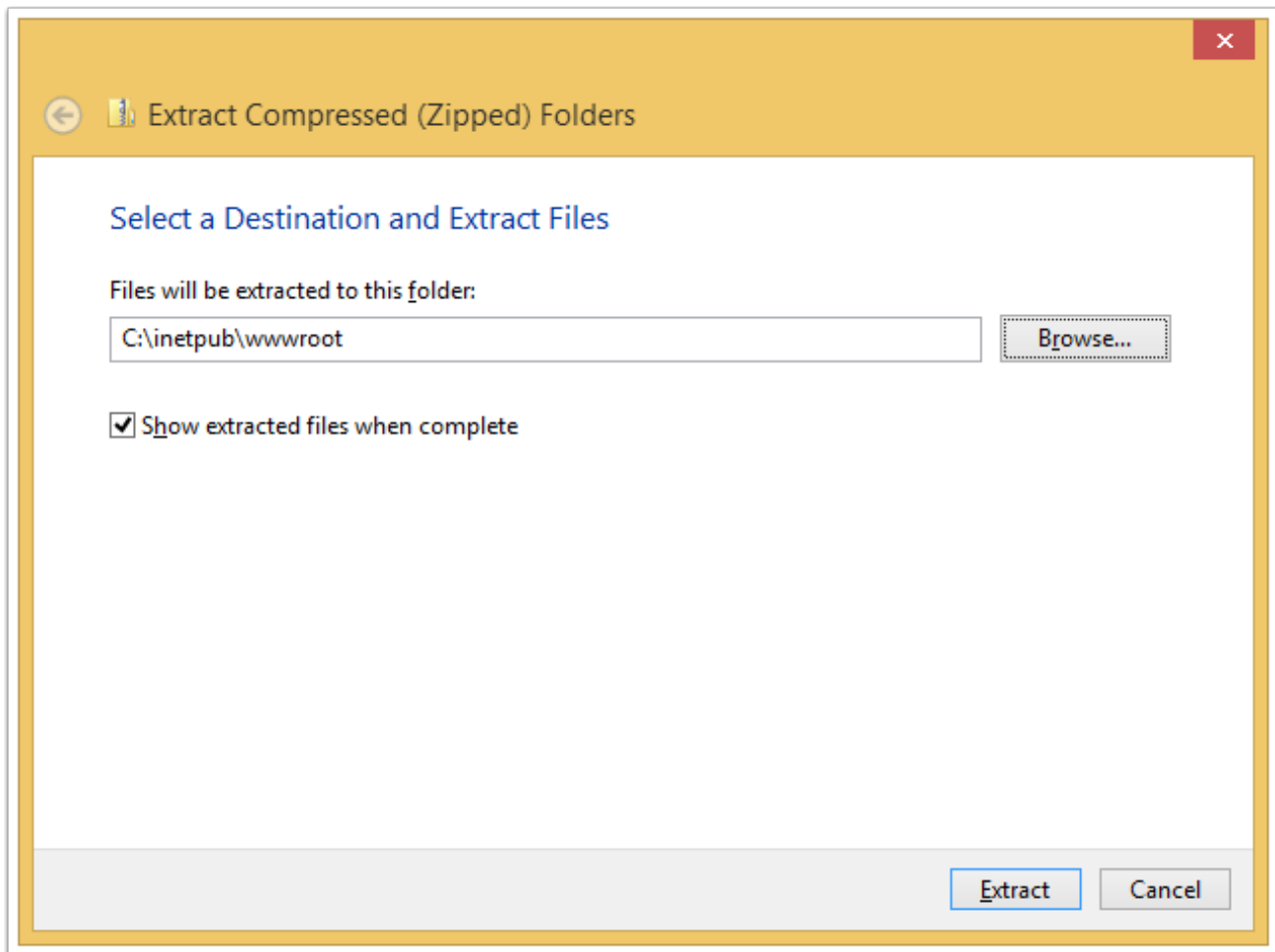
5. Right-click RAWeb and Extract All...



Setup RAWeb Web Interface

6. Extract files to C:\inetpub\wwwroot

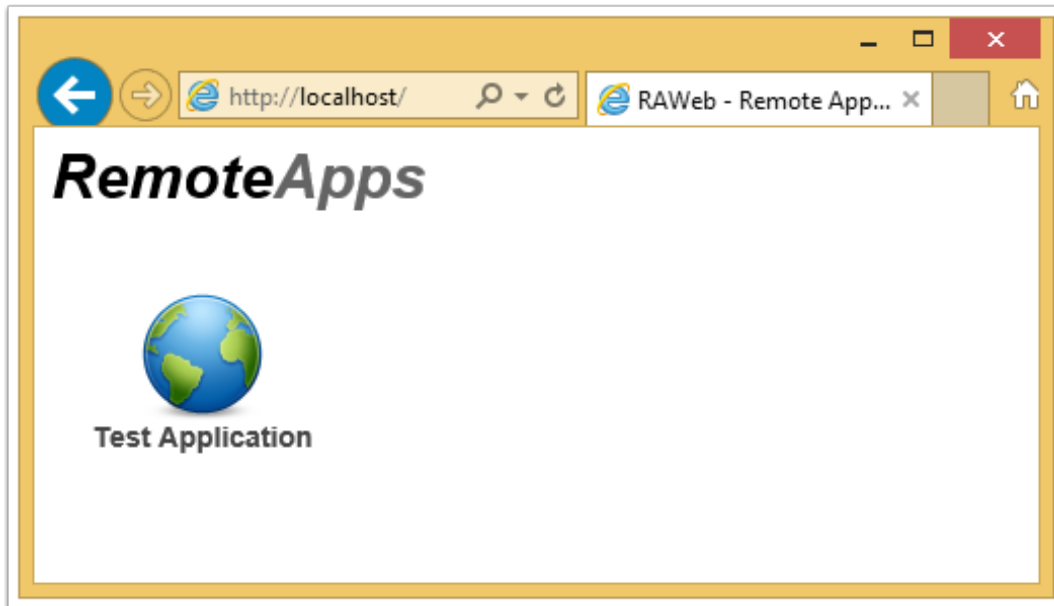
Overwrite files if prompted.



Setup RAWeb Web Interface

7. Browse to <http://localhost/>

You should see RAWeb with a Test Application.



Setup RAWeb Web Interface

8. Publish your RemoteApps and Remote Desktop Connections

For each RemoteApp you want published on the page, save it's RDP file into **c:\inetpub\wwwroot\rdp**

If you want a custom image displayed for an app, put a PNG image file into **c:\inetpub\wwwroot\png** with the same name as the rdp file.

For example: Outlook2010.rdp would need an image called Outlook2010.png. Images will display at 64x64 pixels.

Setup RAWeb Web Interface

